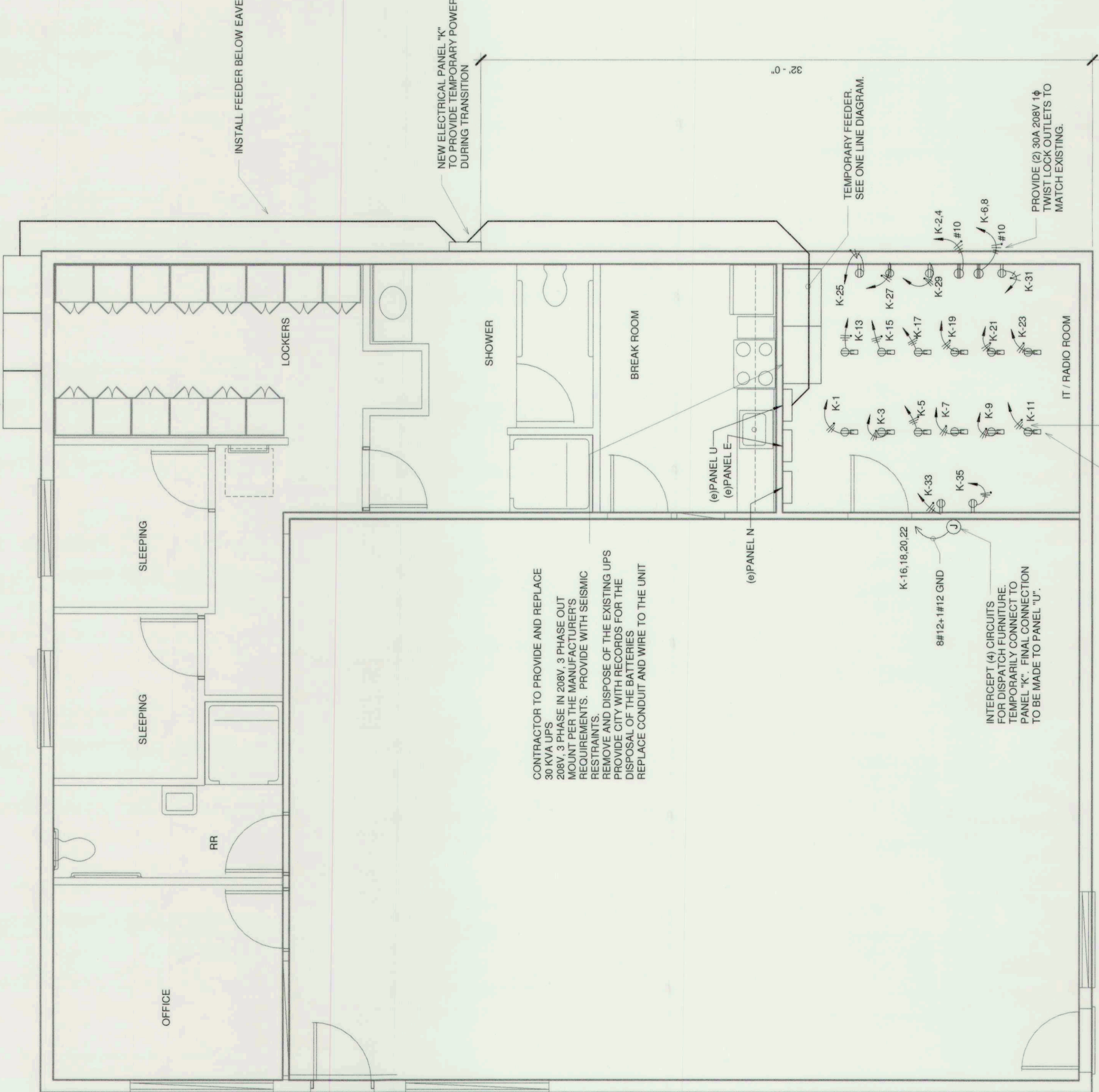


(E) MAIN ELECTRICAL SERVICE



ANTICIPATED WORK FLOW

- PHASE 1:
1. THE CONTRACTOR IS TO PROVIDE NEW OUTLETS ON CEILING, POWERED BY NEW PANEL "K" WHICH WILL BE ON GENERATOR POWER.
2. MAKE TEMPORARY CONNECTION TO 4 DISPATCH DESKS AT JUNCTION BOX.
- PHASE 2:
3. THE CITY WILL TRANSFER SERVER EQUIPMENT FROM THE PANEL "U" AND PANEL "E" TO THE NEW OUTLETS FED BY PANEL "K".
4. INSTALL TEMPORARY FEEDER (#2-1#6 GND) TO FEED PANEL "U" FROM PANEL "K".
- PHASE 3:
5. THE CONTRACTOR WILL REPLACE THE UPS, PANEL "E", AND PANEL "U".
6. RECONNECT PANEL "U" DIRECTLY FROM UPS AND DEMOLISH TEMPORARY FEEDER.
- PHASE 4:
7. THE CITY WILL TRANSFER LOADS BACK TO PANEL "E" AND PANEL "U".
8. RECONNECT DISPATCH FURNITURE TO PANEL "U".

1 ELECTRICAL PLAN

SCALE: 1/4" = 1'-0"

HCS Engineering Inc.
50 Years
4512 Feather River Dr #f, Stockton, CA 95219
209-478-8270 | www.hcs-eng.com

F52 COMMUNICATION CENTER UPS REPLACEMENT		ELECTRICAL PLAN	
110 W SONORA STREET STOCKTON, CA 95203		110 W SONORA STREET STOCKTON, CA 95203	
SCALE: AS SHOWN	APPROVER	DATE	BY
DRWN: RCS	<i>[Signature]</i>	3.17.21	RCS
ENG: RCS			
CHK: RCS			
06/25/17			
SHEET NO. 3		OF 4 SHEETS	
PROJECT NO. F022001		REV. NO.	

REV. NO.	DESCRIPTION	DATE	BY	APRVD
	PLAN/ISSUE SET	3.17.21	RCS	RCS

